

rev. 0275.

rev. 0275.

2 additional obscure glazed windows. (as per planning permission).

proposed additional window. subject to planning.

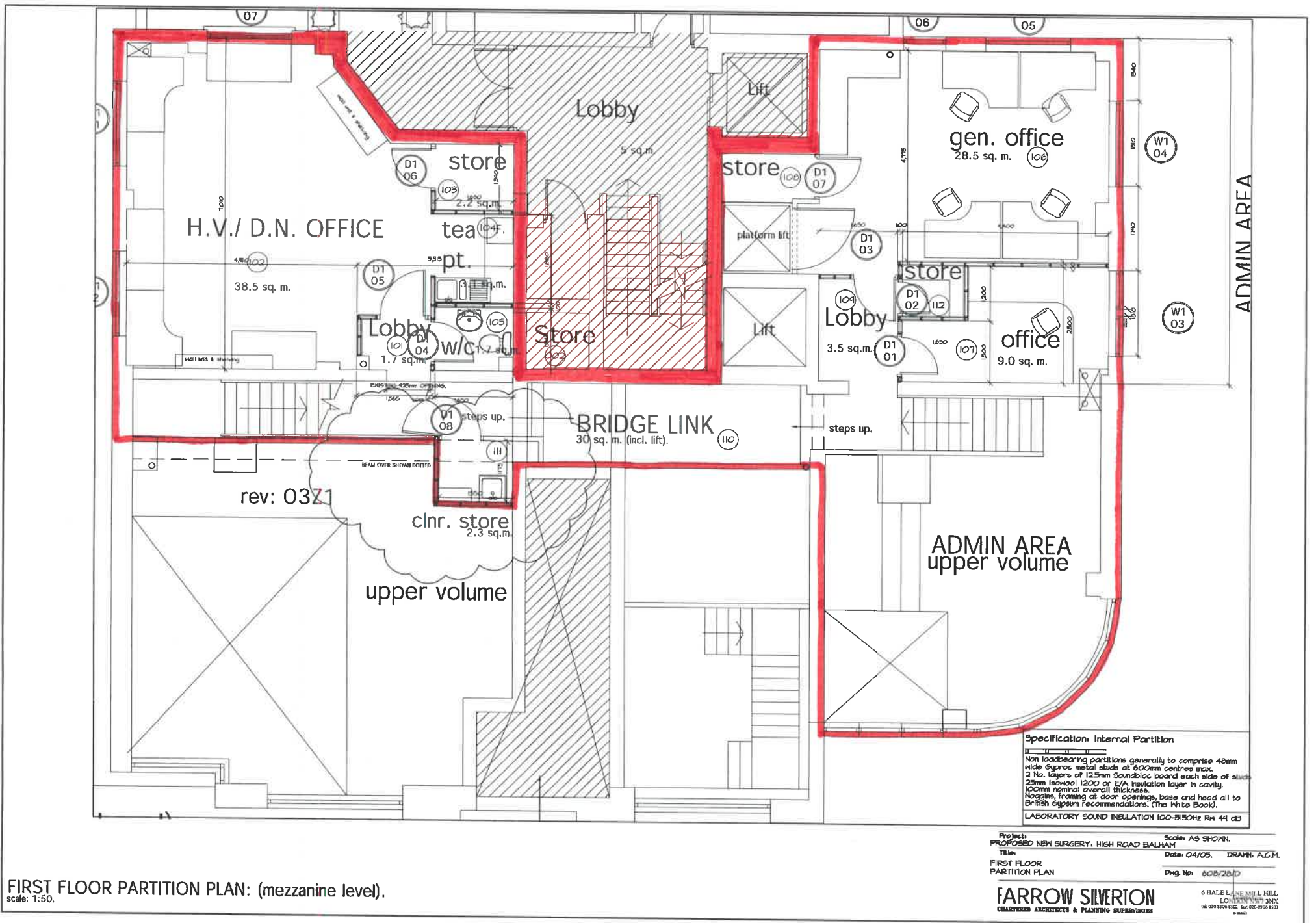
Specification: Internal Partition
 Non loadbearing partitions generally to comprise 40mm wide cyproc metal studs at 600mm centres max. 2 No. layers of 12.5mm Soundloc board each side of studs 25mm (sawdust) 1200 or 15A insulation layer in cavity. 100mm nominal overall thickness. Nagging, framing at floor openings, base and head all to British Gypsum Recommendations. (The White Book).
 LABORATORY SOUND INSULATION 100-3150Hz Rn 44 dB

BASEMENT / GROUND FLOOR PARTITION PLAN
 scale: 1:50.

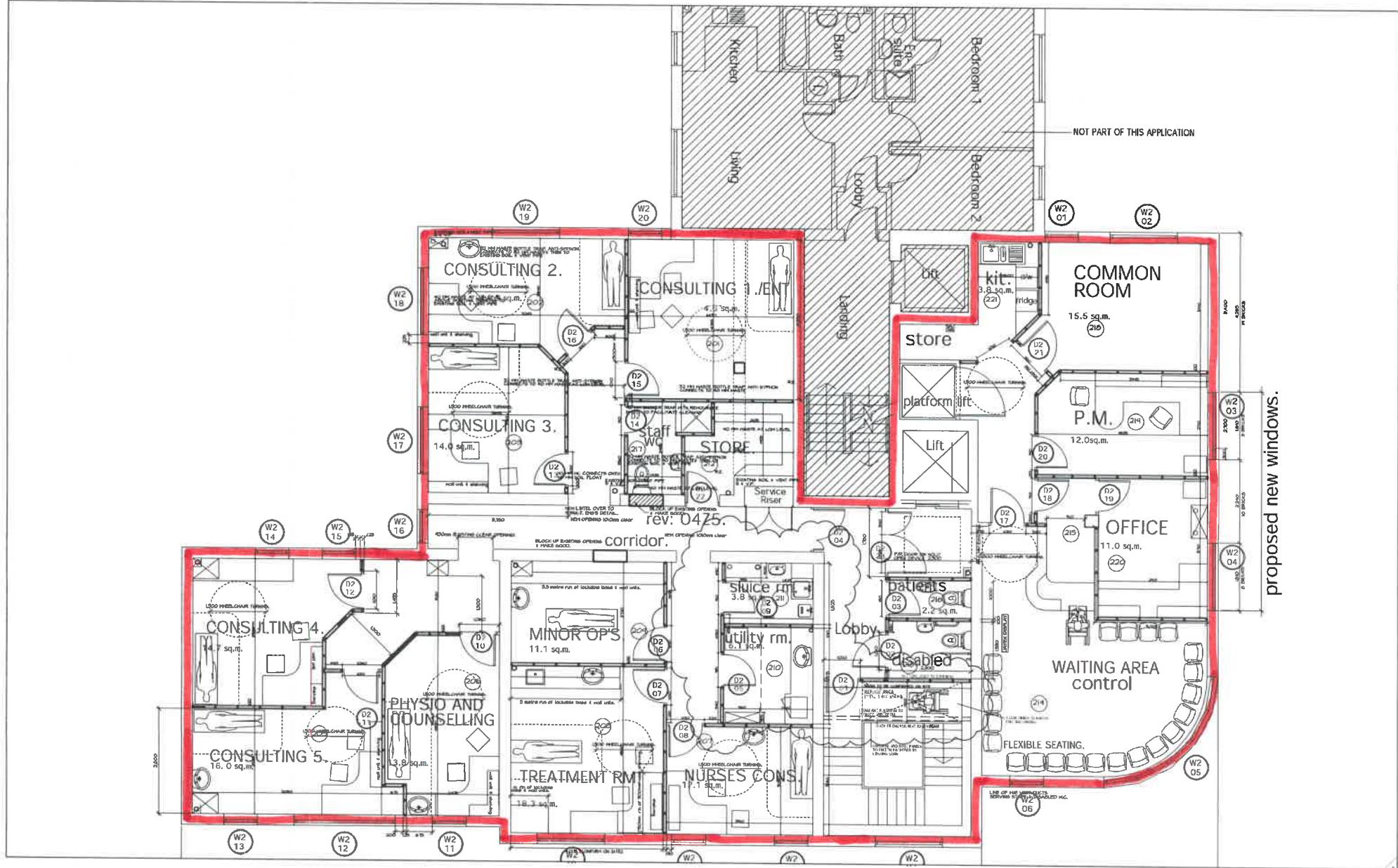
Project: PROPOSED NEW SURGERY, HIGH ROAD BALHAM
 Title: BASEMENT/GROUND FLOOR PARTITION PLAN
 Scale: AS SHOWN.
 Date: 04/05. DRAWN: A.C.M.
 Dwg. No: 608/27/5

FARROW SILVERTON
 CHARTERED ARCHITECTS & PLANNING SUPERVISORS

6 HALEY HILL L. HILL, LONDON NW3 3XK
 Tel: 020 8996 8162 Fax: 020 8996 8161
 www: www.farrow-silverton.com



FIRST FLOOR PARTITION PLAN: (mezzanine level).
 scale: 1:50.



SECOND FLOOR PARTITION PLAN
scale: 1:50.

Specification Internal Partition
 Non loadbearing partitions generally to comprise 40mm
 wide gypsum mineral studs at 600mm centres max.
 2 No. layers of 12.5mm Gypsum board each side of studs
 20mm Insulated LGD on S/A insulation layer in cavity.
 100mm metal ceiling. Full depth
 Negative Framing at door openings, base and head all to
 comply with fire recommendations (The White Book).
 LABORATORY SOUND INSULATION ISO-51030 Rev 44 db

Project: PROPOSED NEW SURGERY, HIGH ROAD BALJAMAT
 Scale: AS SHOWN
 Title: SECOND FLOOR PARTITION PLAN
 Date: 04/05 DRAWN: JZ/24
 Dep. No: 60824/0
FARROW SILVERTON
 CHARTERED ARCHITECTS & PLANNING PROFESSIONALS
 4 HALE, LITTLE HILL, LONDON W9 1JY
 TEL: 020 8996 9000 FAX: 020 8996 9001